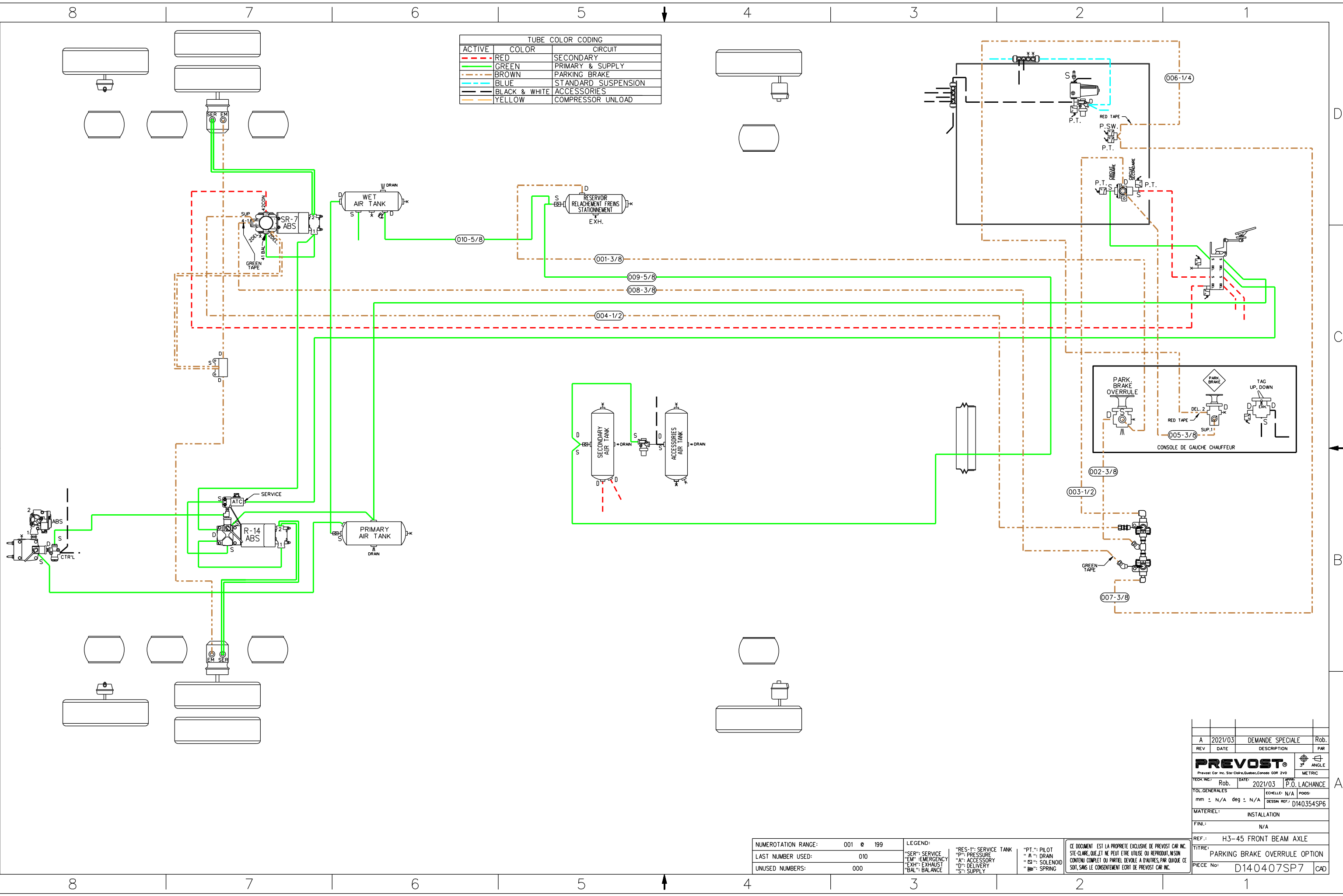


ACTIVE	COLOR	CIRCUIT
- - -	RED	SECONDARY
—	GREEN	PRIMARY & SUPPLY
- - -	BROWN	PARKING BRAKE
- - -	BLUE	STANDARD SUSPENSION
- - -	BLACK & WHITE	ACCESSORIES
- - -	YELLOW	COMPRESSOR UNLOAD

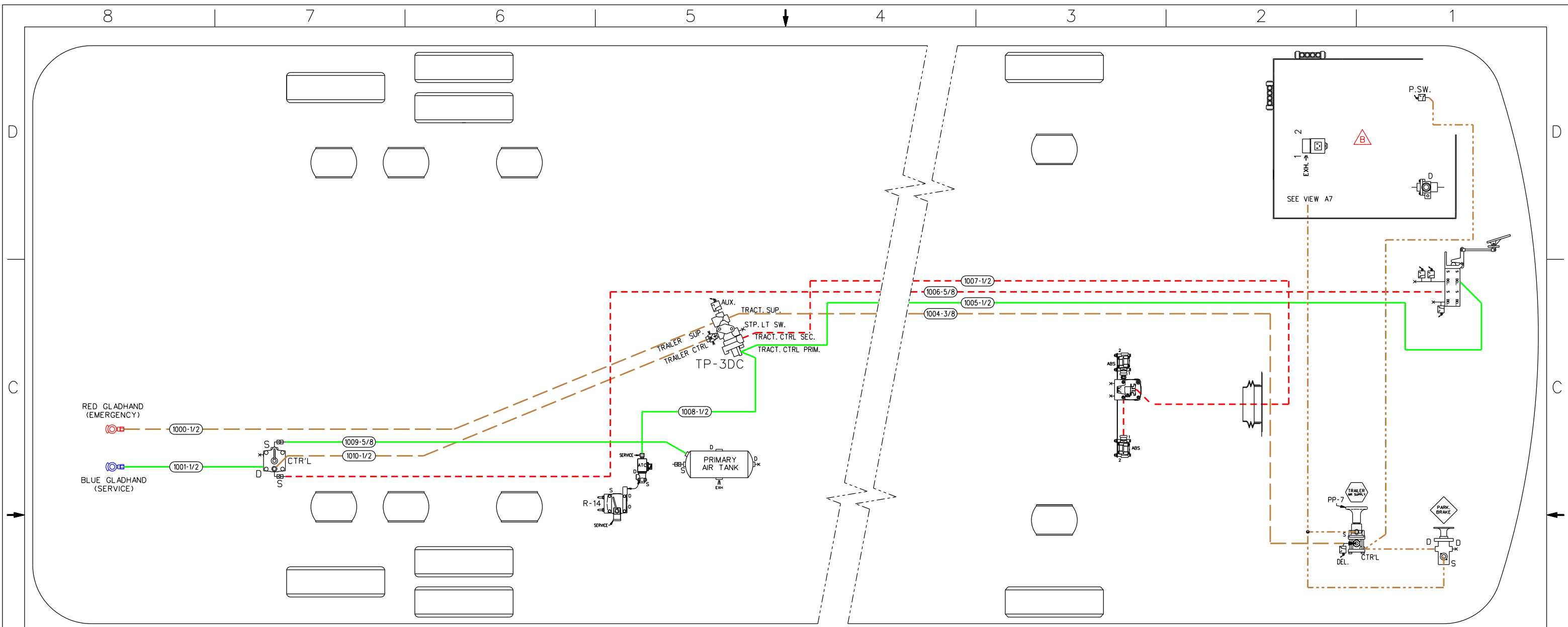


REV	DATE	DESCRIPTION	PAR
A	2021/03	DEMANDE SPECIALE	Rob.
PREVOST®			
<small>Prevost Car Inc. Ste-Clair, Quebec, Canada QOR 2V0</small>			
TECH.:	Rob.	DATE:	2021/03
TOL. GENERALES		ECHELLE:	N/A
mm ±	N/A	deg ±	N/A
MATERIEL: INSTALLATION			
FINI: N/A			
REF.: H3-45 FRONT BEAM AXLE			
TITRE: PARKING BRAKE OVERRULE OPTION			
PIECE No: D140407SP7 CAD			

NUMEROTATION RANGE:	001 @ 199
LAST NUMBER USED:	010
UNUSED NUMBERS:	000

LEGEND:	"RES-1": SERVICE TANK	"PT-1": PILOT
"SER": SERVICE	"P": PRESSURE	"A": DRAIN
"EM": EMERGENCY	"A": ACCESSORY	"S": SOLENOID
"EXH": EXHAUST	"D": DELIVERY	"S": SPRING
"BAL": BALANCE	"S": SUPPLY	

CE DOCUMENT EST LA PROPRIETE EXCLUSIVE DE PREVOST CAR INC. SIE-CLARE, QUE ET NE PEUT ETRE UTILISE OU REPRODUIT, NI SON CONTENU COMPLET OU PARTIEL DEVOLE A D'AUTRES, PAR QUOIQUE CE SOIT, SANS LE CONSENTEMENT ECRIT DE PREVOST CAR INC.



RED GLADHAND
(EMERGENCY)

BLUE GLADHAND
(SERVICE)

TP-3DC

AUX. TRACT. SUP.
STP. LT. SW.
TRACT. CTRL. SEC.
TRACT. CTRL. PRIM.

1008-1/2

PRIMARY AIR TANK

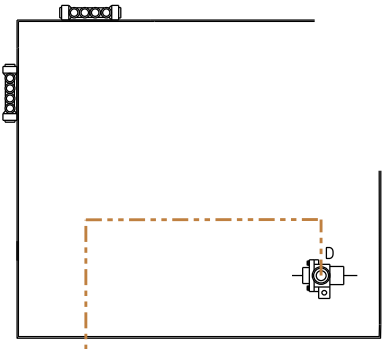
R-14
SERVICE

1007-1/2
1006-5/8
1005-1/2
1004-3/8

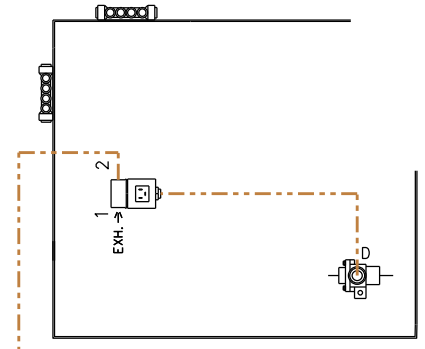
ABS

PP-7
DEL. CTRL

PARK BRAKE



WITHOUT KNEELING
OPTION



WITH KNEELING OPTION
OR
WITHOUT KNEELING WITH WCL OPTION

VIEW A7

TUBE COLOR CODING	
ACTIVE COLOR	CIRCUIT
	RED SECONDARY
	GREEN PRIMARY & SUPPLY
	YELLOW PARKING BRAKE
	BROWN TRAILER

NUMEROTATION RANGE:	1000 @ 1099
LAST NUMBER USED:	1010
UNUSED NUMBERS:	1002, 1003

LEGEND:	"RES-1": SERVICE TANK	"PT.": PILOT
"SER": SERVICE	"P": PRESSURE	"A": DRAIN
"EM": EMERGENCY	"A": ACCESSORY	"S": SOLENOID
"EXH": EXHAUST	"D": DELIVERY	"SP": SPRING
"BAL": BALANCE	"S": SUPPLY	

THIS DOCUMENT IS THE EXCLUSIVE PROPERTY OF PREVOST CAR INC. SITE-CLARE, QUE., AND MAY NOT BE USED, OR REPRODUCED, NOR ITS CONTENT OR PART THERE OF DISCLOSED TO OTHERS BY ANY PERSON OR COMPANY, SAVE WITH THE EXPRESS CONSENT IN WRITING FROM PREVOST CAR INC.

B	2015/01	O.C. #2013172	Rob.
A	2013/09	O.C. #2012125	Rob.
REV	DATE	DESCRIPTION	BY
PREVOST			
Prevost Car Inc. Ste-Clare, Quebec, Canada QOR 2V0			
ENG. TEST:	DATE:	APPR:	M.J.H.
Rob.	2013/06		
GENERAL TOL.	ECHELLE: N/A	PODS:	
mm ± N/A deg ± N/A	D140380	D140381	
MATERIAL:	INSTALLATION		
FINISH:	N/A		
REF.:	H3-45		
TITLE:	OPTIONS TRAILER HITCH AIR BRAKES		
PART NUMBER:	D140407 SP1 CAD		

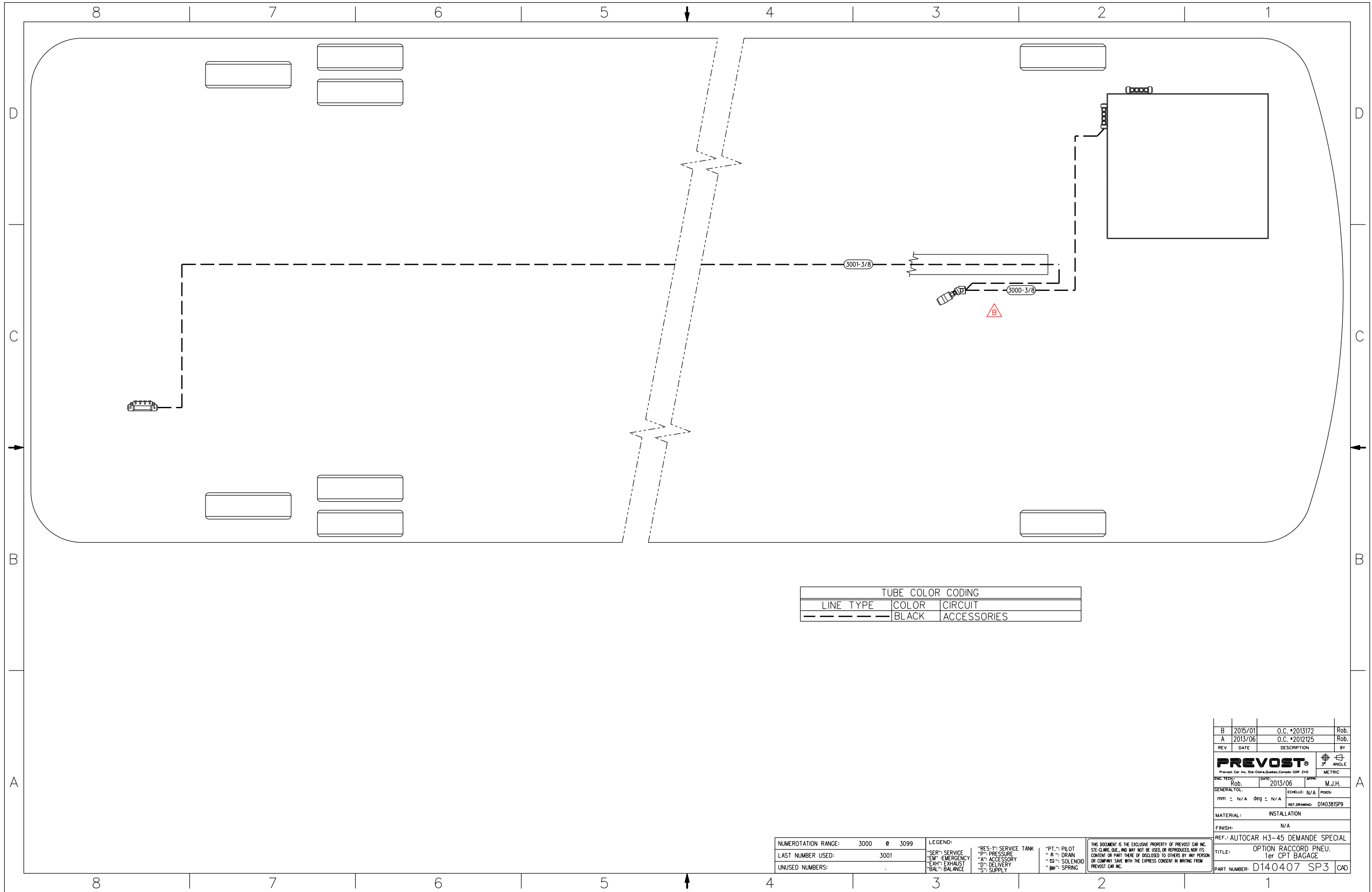
8 7 6 5 4 3 2 1

D

C

B

A

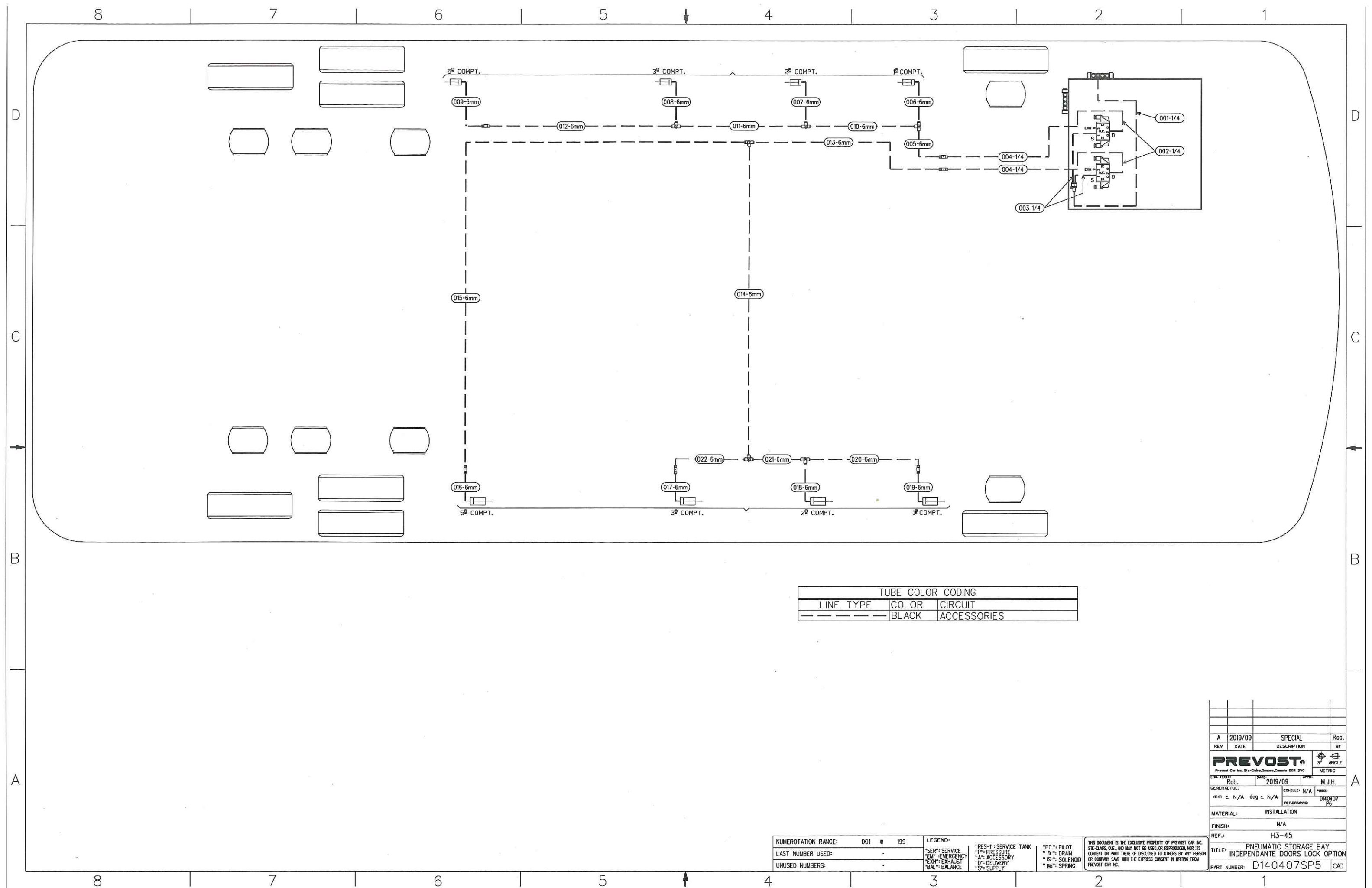


TUBE COLOR CODING		
LINE TYPE	COLOR	CIRCUIT
---	BLACK	ACCESSORIES

NUMEROTATION RANGE:	3000 @ 3099	LEGEND:	"RES-1": SERVICE TANK	"PT.": PILOT	THIS DOCUMENT IS THE EXCLUSIVE PROPERTY OF PREVOST CAR INC. STE-CLAUDE, QUE., AND MAY NOT BE USED, OR REPRODUCED, NOR ITS CONTENT OR PART THEREOF, DISCLOSED TO OTHERS BY ANY PERSON OR COMPANY, SAVE WITH THE EXPRESS CONSENT IN WRITING FROM PREVOST CAR INC.
LAST NUMBER USED:	3001	"SER": SERVICE	"P": PRESSURE	"M": DRAIN	
UNUSED NUMBERS:	.	"EM": EMERGENCY	"A": ACCESSORY	"ES": SOLENOID	

"EXH": EXHAUST
 "ID": DELIVERY
 "SI": SUPPLY
 "BAL": BALANCE
 "SP": SPRING

REV	DATE	DESCRIPTION	BY
B	2015/01	O.C. #2013172	Rob.
A	2013/06	O.C. #2012125	Rob.
PREVOST <small>Prevost Car Inc. Ste-Clair, Quebec, Canada G0R 2V0</small>			
ENG. TECH:	DATE:	APPR:	ANGLE:
Rob.	2013/06	M.J.H.	METRIC
GENERAL TOL:	mm ± N/A	deg ± N/A	PODS:
REF. DRAWING: D140381SP9			
MATERIAL: INSTALLATION			
FINISH: N/A			
REF.: AUTOCAR H3-45 DEMANDE SPECIAL			
TITLE: OPTION RACCORD PNEU. 1er CPT BAGAGE			
PART NUMBER: D140407 SP3 CAD			

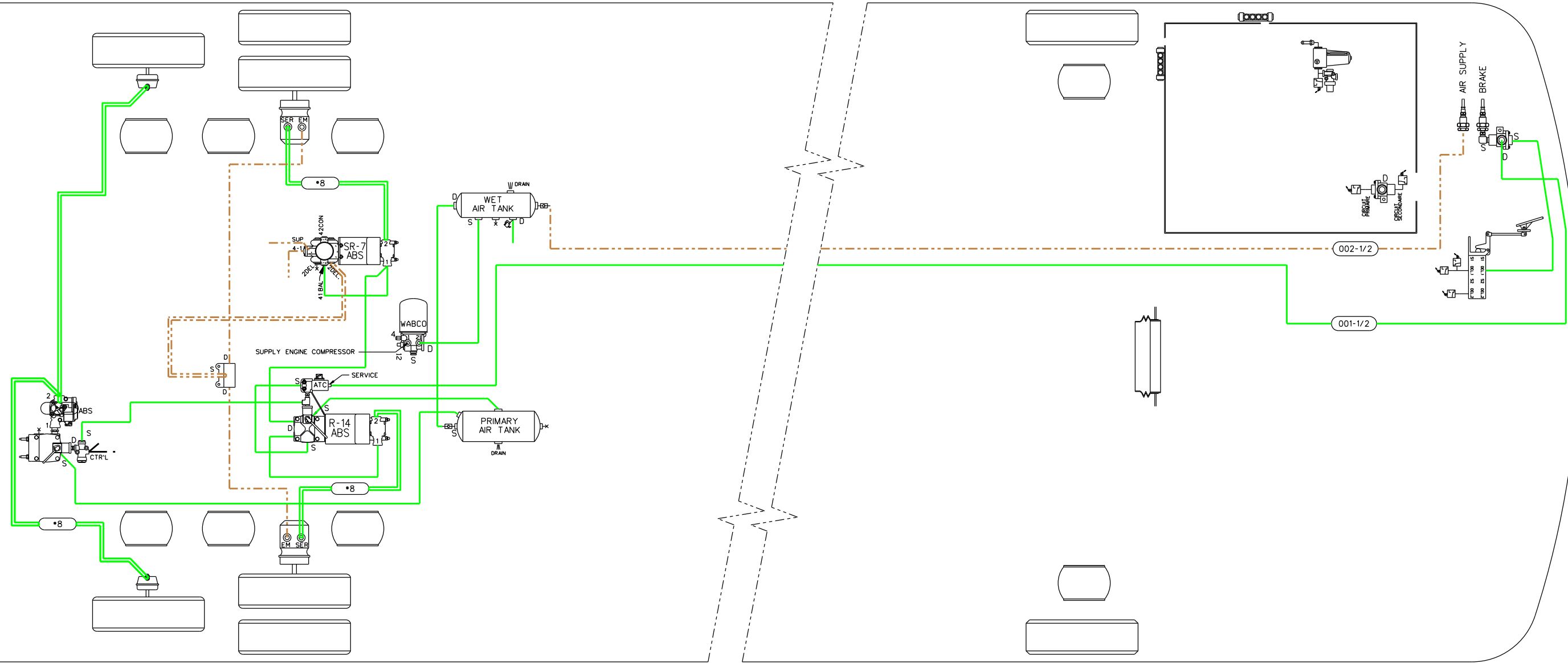


TUBE COLOR CODING		
LINE TYPE	COLOR	CIRCUIT
---	BLACK	ACCESSORIES

REV	DATE	DESCRIPTION	BY
A	2019/09	SPECIAL	Rob.
PREVOST® <small>Prevost Car Inc. Ste-Clotilde-Quebec, Canada G9R 2V0</small>			
DATE TECH	DATE	APPR	METRIC
Rob.	2019/09	M.J.H.	30° ANGLE
GENERAL TOL.	mm ± N/A	deg ± N/A	PODS: N/A
REF DRAWING:	D140407 PB		
MATERIAL:	INSTALLATION		
FINISH:	N/A		
REF.:	H3-45		
TITLE:	PNEUMATIC STORAGE BAY INDEPENDANTE DOORS LOCK OPTION		
PART NUMBER:	D140407SP5 CAD		

NUMEROTATION RANGE:	001 @ 199	LEGEND:	"RES-1": SERVICE TANK	"PT.": PILOT
LAST NUMBER USED:	-	"SER": SERVICE	"P": PRESSURE	"A": DRAIN
UNUSED NUMBERS:	-	"EM": EMERGENCY	"A": ACCESSORY	"S": SOLENOID
		"EXH": EXHAUST	"D": DELIVERY	"EM": SPRING
		"BAL": BALANCE	"S": SUPPLY	

THIS DOCUMENT IS THE EXCLUSIVE PROPERTY OF PREVOST CAR INC. STE-CLAUDE, QUE., AND MAY NOT BE USED, OR REPRODUCED, NOR ITS CONTENT OR PART THERE OF DISCLOSED TO OTHERS BY ANY PERSON OR COMPANY SINCE WITH THE EXPRESS CONSENT IN WRITING FROM PREVOST CAR INC.



TUBE COLOR CODING		
LINE TYPE	COLOR	CIRCUIT
---	BROWN	AIR LINE SUPPLY
—	GREEN	AIR LINE BRAKE

NUMEROTATION RANGE:	001 @ 002
LAST NUMBER USED:	002
UNUSED NUMBERS:	

LEGEND:	"SL": STOP LIGHT SWITCH "RES-1": SERVICE TANK "SER": SERVICE "EM": EMERGENCY "EXH": EXHAUST "BAL": BALANCE "PT": PILOT "P": PRESSURE "A": ACCESSORY "D": DELIVERY "S": SUPPLY "DR": DRAIN "SOL": SOLENOID "SPR": SPRING
---------	--

THIS DOCUMENT IS THE EXCLUSIVE PROPERTY OF PREVOST CAR INC. SITE-CLARE, QUE. AND MAY NOT BE USED, OR REPRODUCED, NOR ITS CONTENT OR PART THERE OF DISCLOSED TO OTHERS BY ANY PERSON OR COMPANY SAVE WITH THE EXPRESS CONSENT IN WRITING FROM PREVOST CAR INC.

REV	DATE	DESCRIPTION	BY
A	2020/03	SPECIAL	Rob.
PREVOST			
<small>Prevost Car Inc. Ste-Claire, Quebec, Canada G9R 2V0</small>			
ENG. TECH:	DATE:	APPR:	
Rob.	2020/03	M.J.H.	
GENERAL TOL.	ECHELLE:	PODS:	
mm ± N/A deg ± N/A	N/A		
MATERIAL:	INSTALLATION		
FINISH:	N/A		
REF.:	SPECIAL H3-45 #L-1092		
TITLE:	PNEUMATIC DIAGRAM		
PART NUMBER:	D140407SP6		
			CAD

Pneumatic diagram

PNEUMATIC DIAGRAMS H3-45 COACHES

NO:	D140407P0	REVISION :	J
------------	------------------	-------------------	----------

EFF. OC#	N/A	PRIOR TO OC#	
EFF. VEH#	N/A	PRIOR TO VEH#	

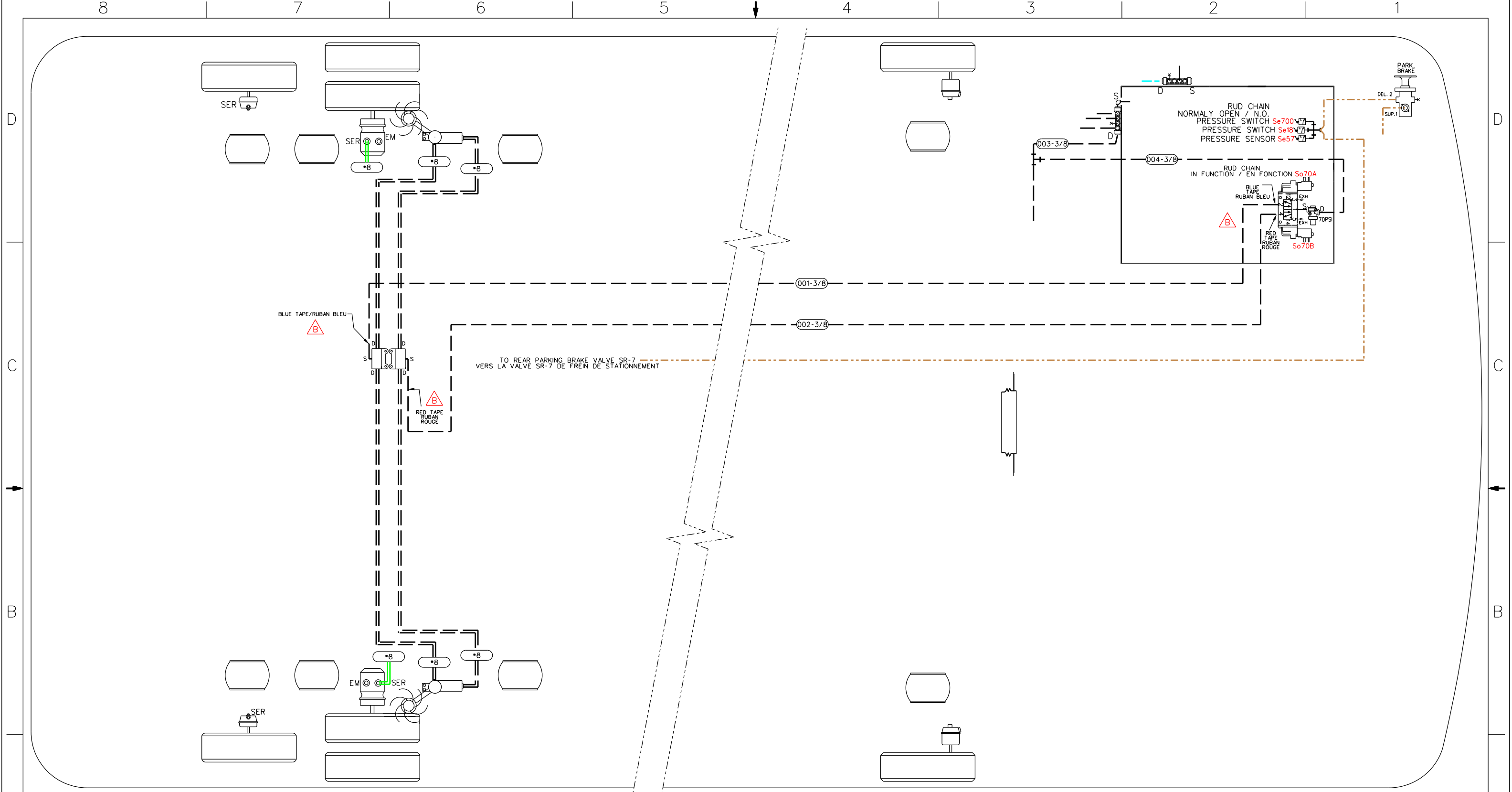
DR.	R. Bouillon	date	2022-02-24
CHK	Pierre-Olivier Lachance	appr	Pierre-Olivier Lachance

REV.	DATE	DESCRIPTION	PAGE	BY	CHK.	APPR.
A	2013-07-16	Coach H3-45, New platform, rear sub-frame OC #2012125. Included OC #2012082 New Suspension Beam Axle. Preliminary Vehicles #E-2482 & #E-2495 Production Vehicle #E-2505 (Front beam axle suspension) D140407SP3 I-SHIFT Transmission Vehicle #E-2525	-	Rob.	M.J.H.	M.J.H.
B	2015-01-23	Coach H3-45, New front pneumatic unit & New air lines color code OC #2013172. Production Vehicle #F-2923	P.1,2,3,4,5, 6, SP1 & SP3	Rob.	M.J.H.	M.J.H.
C	2015-06-19	Add a muffler on the heater water valve who replaces 6mm OD tube exhaust. OC #2015028. #D140407P6 Update Revision C	P.1	Rob.	M.J.H.	M.J.H.
D	2017-09-29	Come back with exhaust tube 6 mm OD natural white color, On the heater water valve, remove muffler. OC #2015092. Production vehicle H3-45 #J-0042.	P.6 P.1	Rob. Rob.	M.J.H. M.J.H.	M.J.H. M.J.H.
E	2018-03-30	Add new TCM Allison module and R.E.L.S. Reduce Engine Load at Stop OC #2018011, Production vehicle #K-0370	P.5	Rob.	M.J.H.	M.J.H.
F	2019-09-23	Add new Special Customer option : Independante left and right luggage air door lock.	SP5	Rob.	P.O. LAC.	P.O. LAC
G	2020-03-06	SPECIAL Brown Coach: Front quick connect fitting air hose for towing, service compartment.	SP6	Rob.	P.O.LAC.	P.O.LAC.
H	2021-03-18	SPECIAL EL EXPRESO LLC TORNADO : Parking Brake Overrule	SP7	Rob.	P.O.LAC	P.O.LAC
I	2022-01-17	Diagram update, (FRONT AIR MANIFOLD BLOCK)	P.1	RGOS	P.O.LAC	P.O.LAC
J	2022-02-24	SPECIAL BREWSTER WITH RUD CHAIN TRACTION SYSTEM Vehicles : #P-1315, 16, 17, 20, 21	SP4	Rob.	P.O.LAC	P.O.LAC

Pneumatic diagram

PNEUMATIC DIAGRAMS H3-45 COACHES

PRODUCTION NUMBER	REV	EFF. VEH.	ECN	DESCRIPTION
D140407P1	E	N/A	N/A	FULL PNEUMATIC SYSTEM FRONT BEAM AXLE
D140407P2	B	#F-2923	2013172	INDEPENDENT FRONT SUSPENSION OPTION
D140407P3	B	#F-2923	2013172	FRONT KNEELING OPTION
D140407P4	B	#F-2923	2013172	LOW-BUOY & HIGH-BUOY OPTIONS (USED WITH KNEELING OPTION)
D140407P5	C	#K-0370	2018011	I-SHIFT TRANSMISSION #E-2525 & ALLISON WITH RETARDER TRANSMISSION OPTIONS
D140407P6	C	#F-2923	-	WITH DOOR AIR LOCK, LUGGAGE COMPARTMENT OPTION
D140407SP1	B	#F-2923	2013172	"SPECIAL" TRAILER HITCH AIR BRAKES OPTION
D140407SP2	A	#E-2505	2012125	"SPECIAL" WITH UNLOAD TAG SYSTEM (PITMAN ARM ACTUATED) OPTION
D140407SP3	B	#F-2923	2013172	"SPECIAL" WITH AIR FITTING 1 ST LUGGAGE COMPARTMENT OPTION
D140407SP4	A	#P-1315	-	"SPECIAL" WITH TIRE CHAIN SYSTEM ON DRIVE AXLE WHEEL
D140407SP5	A	#L-0964	-	"SPECIAL" WITH INDEPENDANTE LEFT AND RIGHT LUGGAGE AIR DOOR LOCK
D140407SP6	A	#L-1092	-	"SPECIAL" WITH FRONT AIR QUICK CONNECT FITTINGS (TOWING) SERVICE COMPT.
D140407SP7	A	#N-1192	-	"SPECIAL" WITH PARKING BRAKE OVERRULE



TUBE COLOR CODING		
LINE TYPE	COLOR	CIRCUIT
=====	BLACK	ACCESSORIES HOSE
-----	BLACK	ACCESSORIES TUBES
-----	BLOWN	PARKING BRAKE TUBES

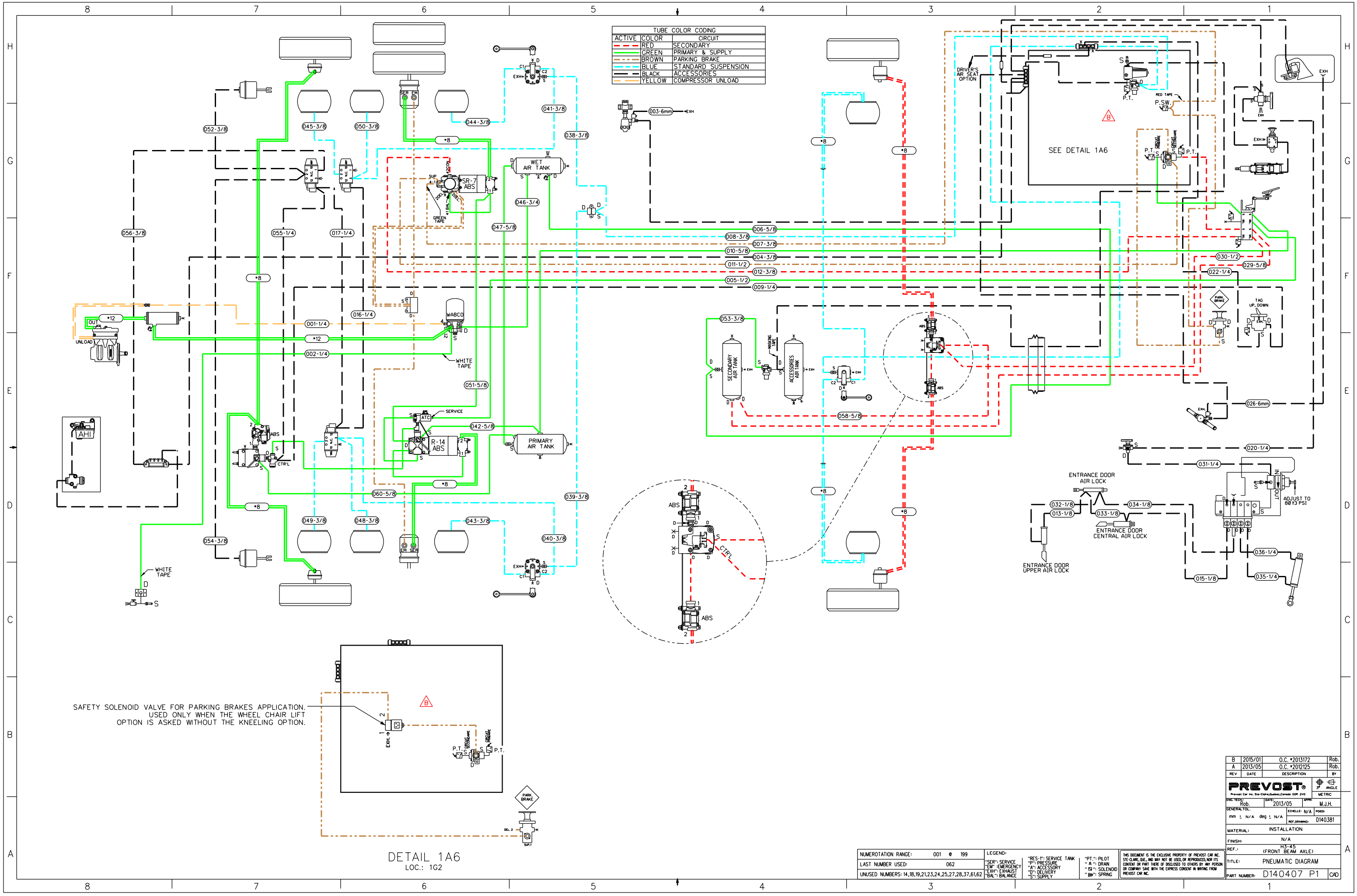
CODE DE COULEURS POUR TUBES		
TYPE DE LIGNE	COULEUR	CIRCUIT
=====	NOIR	BOYAUX ACCESSOIRES
-----	NOIR	TUBES ACCESSOIRES
-----	BRUN	FREIN DE STATIONNEMENT

NUMEROTATION RANGE:	- 0 -
LAST NUMBER USED:	-
UNUSED NUMBERS:	.

LEGEND:			
"SER": SERVICE	"RES-1": SERVICE TANK	"PT": PILOT	"D": DRAIN
"EM": EMERGENCY	"P": PRESSURE	"A": ACCESSORY	"S": SOLENOID
"EXH": EXHAUST	"D": DELIVERY	"CS": SOLENOID	"SP": SPRING
"BAL": BALANCE	"S": SUPPLY		

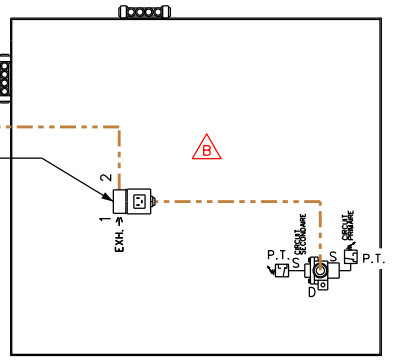
THIS DOCUMENT IS THE EXCLUSIVE PROPERTY OF PREVOST CAR INC. SITE-CLARE, QUE., AND MAY NOT BE USED OR REPRODUCED, NOR ITS CONTENT OR PART THERE OF DISCLOSED TO OTHERS BY ANY PERSON OR COMPANY SAVE WITH THE EXPRESS CONSENT IN WRITING FROM PREVOST CAR INC.

B	2024-11	PCR-244	WADH
A	2022/03	SPECIAL	Rob.
REV	DATE	DESCRIPTION	DR
PREVOST			
Prevost Car Inc. Ste-Clair, Quebec, Canada G0R 2V0			
TECH. ENG.:	Rob.	DATE:	2022/03
APPR.:		DATE:	
TOL. GENERALES:	mm ± N/A	deg ± N/A	PODS:
GENERAL TOL.:	mm ± N/A	deg ± N/A	PODS:
MATERIAL:	INSTALLATION		
FINISH:	N/A		
REF.:	H3-45		
TITRE:	CHAIN SYSTEM DRIVE AXLE		
TITRE:	SPECIAL OPTION		
PIECE No:	D140407 SP4		
PART NUMBER:	D140407 SP4 CAD		



ACTIVE	COLOR	CIRCUIT
—	RED	SECONDARY
—	GREEN	PRIMARY & SUPPLY
—	BROWN	PARKING BRAKE
—	BLUE	STANDARD SUSPENSION
—	BLACK	ACCESSORIES
—	YELLOW	COMPRESSOR UNLOAD

SAFETY SOLENOID VALVE FOR PARKING BRAKES APPLICATION.
USED ONLY WHEN THE WHEEL CHAIR LIFT
OPTION IS ASKED WITHOUT THE KNEELING OPTION.



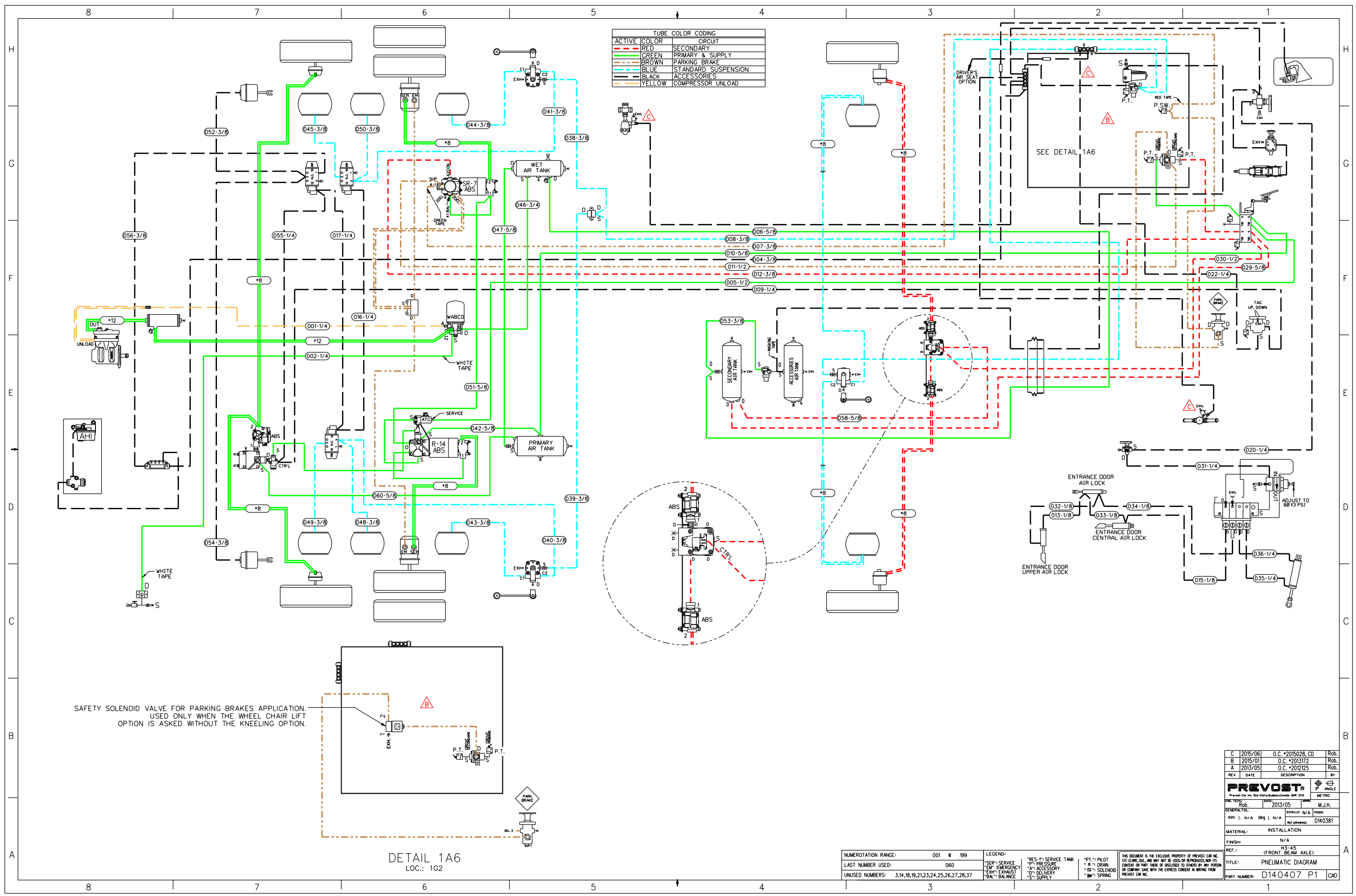
DETAIL 1A6
LOC.: 1G2

NUMERATION RANGE: 001 @ 199
LAST NUMBER USED: 062
UNUSED NUMBERS: 14,18,19,21,23,24,25,27,28,37,61,62

LEGEND:
SERV: SERVICE
EM: EMERGENCY
EXH: EXHAUST
BAL: BALANCE
RES-T: SERVICE TANK
P: PRESSURE
A: ACCESSORY
D: DELIVERY
S: SUPPLY
PT.: PILOT
A: DRAIN
S: SOLENOID
SPR: SPRING

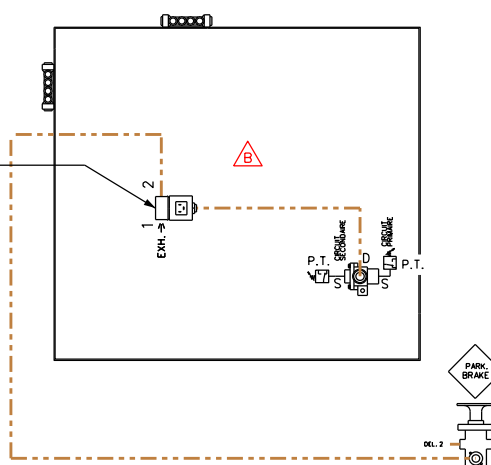
THIS DOCUMENT IS THE EXCLUSIVE PROPERTY OF PREVOST CAR INC. SITE-CLAMP, ONE, AND MAY NOT BE USED OR REPRODUCED FOR THE CONTENT OR PART THERE OF DISCLOSED TO OTHERS BY ANY PERSON OR COMPANY SAVE WITH THE EXPRESS CONSENT IN WRITING FROM PREVOST CAR INC.

B	2015/01	O.C. #2013172	Rob.
A	2013/05	O.C. #2012125	Rob.
REV	DATE	DESCRIPTION	BY
PREVOST <small>Prevost Car Inc. Site-Clamp, One, Quebec, Canada G3H 2Y0</small>			
DESIGNER:	Rob.	DATE:	2013/05
GENERAL TOR:		EDUCATION:	M.J.H.
mm ± N/A	deg ± N/A	POSS:	
MATERIAL:	INSTALLATION		
FINISH:	N/A		
REF.:	H3-45 (FRONT BEAM AXLE)		
TITLE:	PNEUMATIC DIAGRAM		
PART NUMBER:	D140407 P1 CAD		



ACTIVE COLOR	CIRCUIT
RED	SECONDARY
GREEN	PRIMARY & SUPPLY
BROWN	PARKING BRAKE
BLUE	STANDARD SUSPENSION
BLACK	ACCESSORIES
YELLOW	COMPRESSOR UNLOAD

SAFETY SOLENOID VALVE FOR PARKING BRAKES APPLICATION.
USED ONLY WHEN THE WHEEL CHAIR LIFT
OPTION IS ASKED WITHOUT THE KNEELING OPTION.



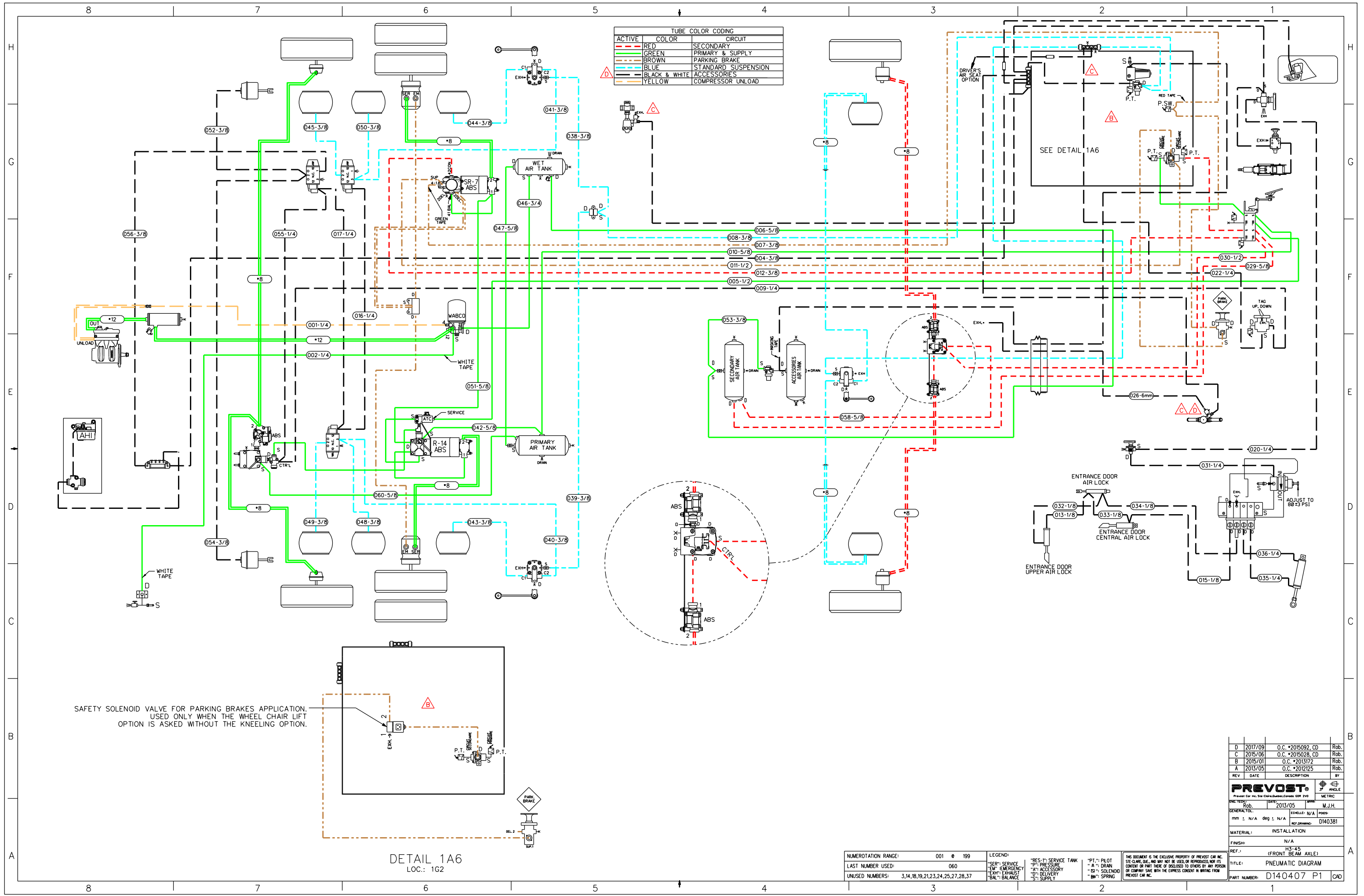
DETAIL 1A6
LOC.: 1G2

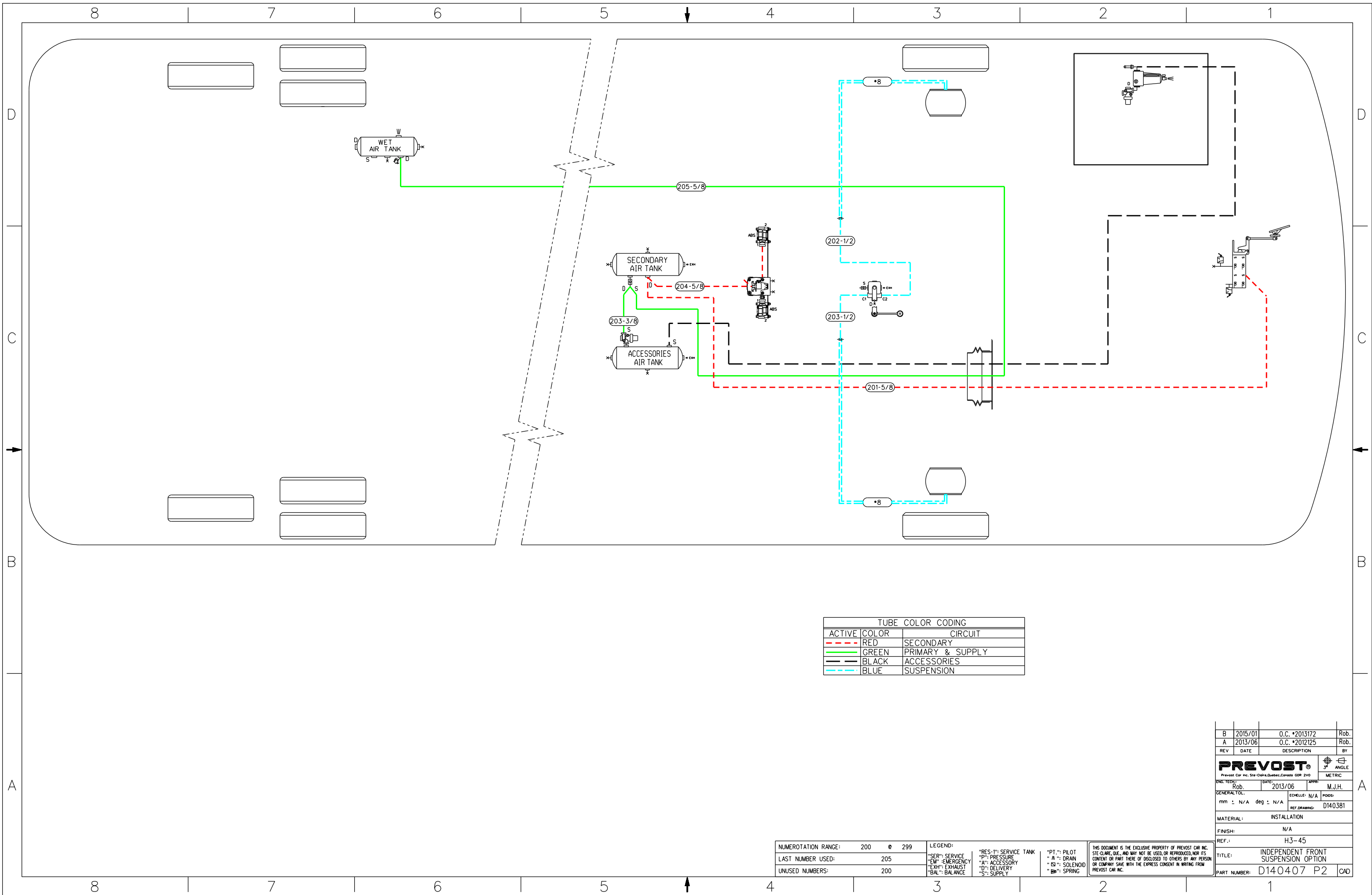
NUMEROTATION RANGE:	001 @ 199
LAST NUMBER USED:	060
UNUSED NUMBERS:	3,14,18,19,21,23,24,25,26,27,28,37

LEGEND:	*RES-T: SERVICE TANK	*PT.: PILOT
*SER: SERVICE	*P: PRESSURE	*A: DRAIN
*EM: EMERGENCY	*A: ACCESSORY	*S: SOLENOID
*EXH: EXHAUST	*D: DELIVERY	*SP: SPRING
*BAL: BALANCE	*S: SUPPLY	

THIS DOCUMENT IS THE EXCLUSIVE PROPERTY OF PREVOST CAR INC. IT IS TO BE USED ONLY FOR THE PURPOSES SPECIFIED HEREIN AND IS NOT TO BE REPRODUCED OR TRANSMITTED IN ANY FORM OR BY ANY MEANS, ELECTRONIC OR MECHANICAL, INCLUDING PHOTOCOPYING, RECORDING, OR BY ANY INFORMATION STORAGE AND RETRIEVAL SYSTEM, WITHOUT THE EXPRESS WRITTEN PERMISSION OF PREVOST CAR INC.

REV	DATE	DESCRIPTION	BY
C	2015/06	O.C. #2015028, CD	Rob.
B	2015/01	O.C. #2013172	Rob.
A	2013/05	O.C. #2012125	Rob.
<p>PREVOST</p> <p>Prevost Car Inc. 2500 Deschênes Avenue, Québec, QC H3L 4S5</p> <p>DATE: 2013/05</p> <p>SCALE: N/A</p> <p>MATERIAL: INSTALLATION</p> <p>FINISH: N/A</p> <p>REF.: H3-4S (FRONT BEAM AXLE)</p> <p>TITLE: PNEUMATIC DIAGRAM</p> <p>PART NUMBER: D140407 P1</p>			





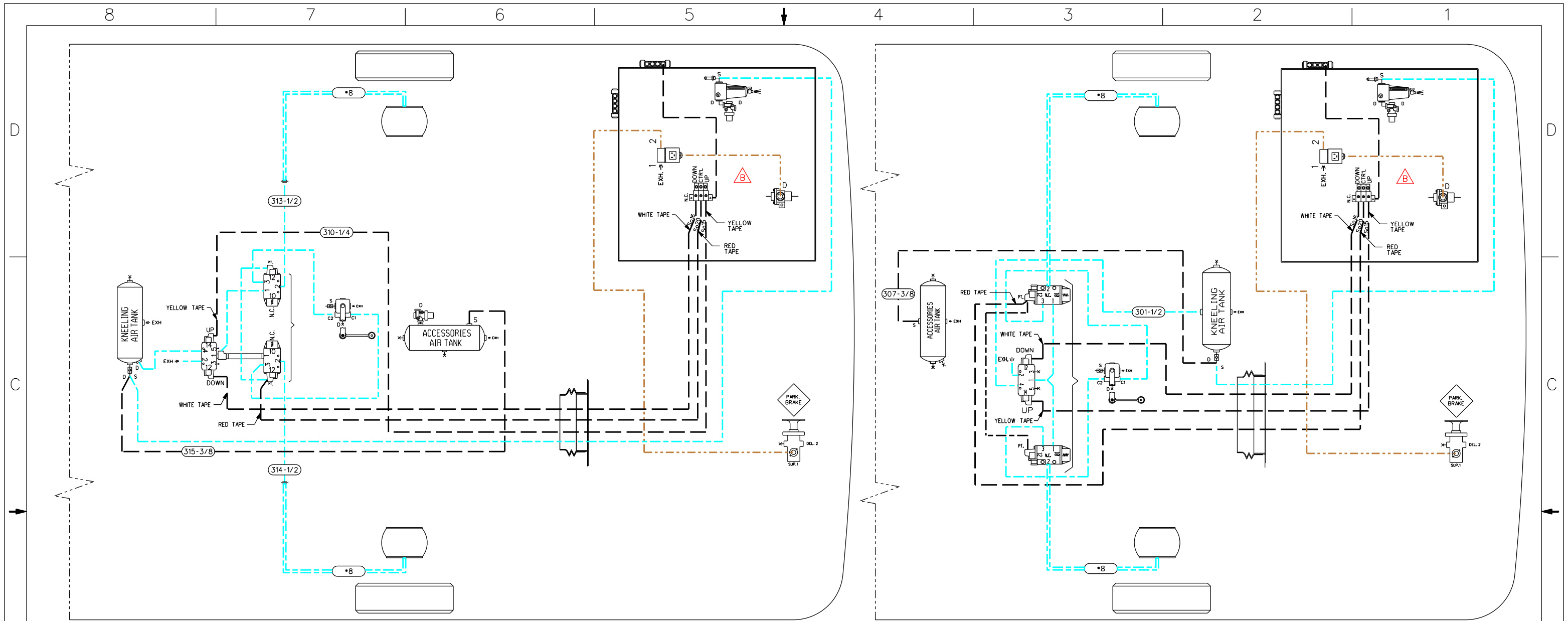
TUBE COLOR CODING	
ACTIVE COLOR	CIRCUIT
RED	SECONDARY
GREEN	PRIMARY & SUPPLY
BLACK	ACCESSORIES
BLUE	SUSPENSION

NUMEROTATION RANGE:	200 @ 299
LAST NUMBER USED:	205
UNUSED NUMBERS:	200

LEGEND:	"RES-1": SERVICE TANK	"PT.": PILOT
"SER": SERVICE	"P": PRESSURE	"A.": DRAIN
"EM": EMERGENCY	"AK": ACCESSORY	"S": SOLENOID
"EXH": EXHAUST	"D": DELIVERY	"SP": SPRING
"BAL": BALANCE	"S": SUPPLY	

THIS DOCUMENT IS THE EXCLUSIVE PROPERTY OF PREVOST CAR INC. SITE-CLIQUE, QUEBEC, CANADA. IT MAY NOT BE USED OR REPRODUCED FOR ANY OTHER CONTENT OR PART THEREOF DISCLOSED TO OTHERS BY ANY PERSON OR COMPANY WITHOUT THE EXPRESS CONSENT IN WRITING FROM PREVOST CAR INC.

REV	DATE	DESCRIPTION	BY
B	2015/01	O.C. #2013172	Rob.
A	2013/06	O.C. #2012125	Rob.
PREVOST			
<small>Prevost Car Inc. Ste-Claire, Quebec, Canada QOR 2V0</small>			
ENG. TECH:	DATE:	APPR:	
Rob.	2013/06	M.J.H.	
GENERAL TOL:	ECHELLE:	N/A	PODS:
mm ± N/A deg ± N/A	REF. DRAWING:	D140381	
MATERIAL:	INSTALLATION		
FINISH:	N/A		
REF.:	H3-45		
TITLE:	INDEPENDENT FRONT SUSPENSION OPTION		
PART NUMBER:	D140407 P2 CAD		



WITH INDEPENDENT FRONT SUSPENSION OPTION

WITH FRONT BEAM AXLE OPTION

TUBE COLOR CODING		
LINE TYPE	COLOR	CIRCUIT
—	BLUE	SUSPENSION
—	BROWN	PARKING BRAKES
—	BLACK	ACCESSORIES FOR SUSPENSION

B	2015/01	O.C. #2013172	Rob.
A	2013/06	O.C. #2012125	Rob.
REV	DATE	DESCRIPTION	BY

PREVOST Prevost Car Inc. Ste-Claire, Québec, Canada G0R 2V0			
ENCL. TECH:	DATE:	APPR:	BY:
	2013/06		M.J.H.
GENERAL TOL:	ECHELLE: N/A	PODS:	
mm ± N/A deg ± N/A	REF. DRAWING:	D140380	D140381

MATERIAL: INSTALLATION
FINISH: N/A

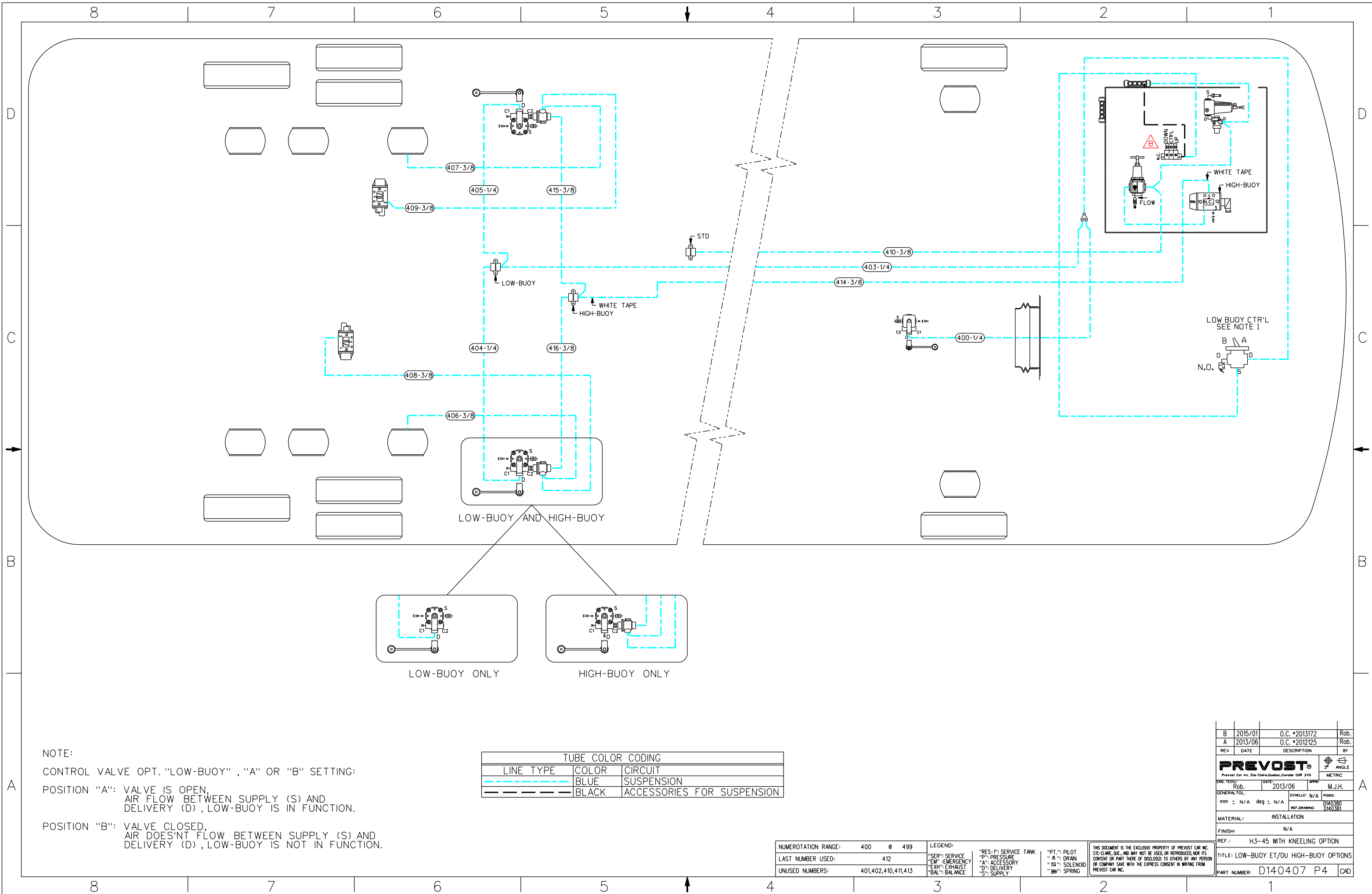
REF.: H3-45

TITLE: FRONT KNEELING OPTION
PART NUMBER: D140407 P3 CAD

NUMEROTATION RANGE:	300 e 399
LAST NUMBER USED:	315
UNUSED NUMBERS:	302,303,304,306,307,308,309,310,311,312,316

LEGEND:			
"SER": SERVICE	"RES": SERVICE TANK	"PT.": PILOT	"S": SOLENOID
"P": PRESSURE	"A": ACCESSORY	"A": DRAIN	"S": SPRING
"EM": EMERGENCY	"D": DELIVERY	"E3": SOLENOID	
"EXH": EXHAUST	"S": SUPPLY		
"BAL": BALANCE			

THIS DOCUMENT IS THE EXCLUSIVE PROPERTY OF PREVOST CAR INC. STE-CLAIRE, QUE., AND MAY NOT BE USED, OR REPRODUCED, NOR ITS CONTENT OR PART THERE OF DISCLOSED TO OTHERS BY ANY PERSON OR COMPANY SAKE WITH THE EXPRESS CONSENT IN WRITING FROM PREVOST CAR INC.

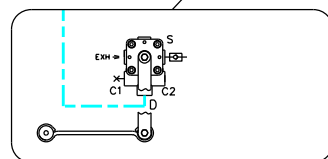


NOTE:
CONTROL VALVE OPT. "LOW-BUOY", "A" OR "B" SETTING:

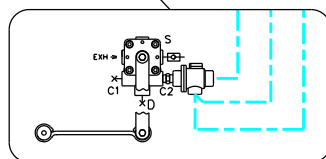
POSITION "A": VALVE IS OPEN,
AIR FLOW BETWEEN SUPPLY (S) AND
DELIVERY (D), LOW-BUOY IS IN FUNCTION.

POSITION "B": VALVE CLOSED,
AIR DOES'NT FLOW BETWEEN SUPPLY (S) AND
DELIVERY (D), LOW-BUOY IS NOT IN FUNCTION.

TUBE COLOR CODING		
LINE TYPE	COLOR	CIRCUIT
	BLUE	SUSPENSION
	BLACK	ACCESSORIES FOR SUSPENSION



LOW-BUOY ONLY



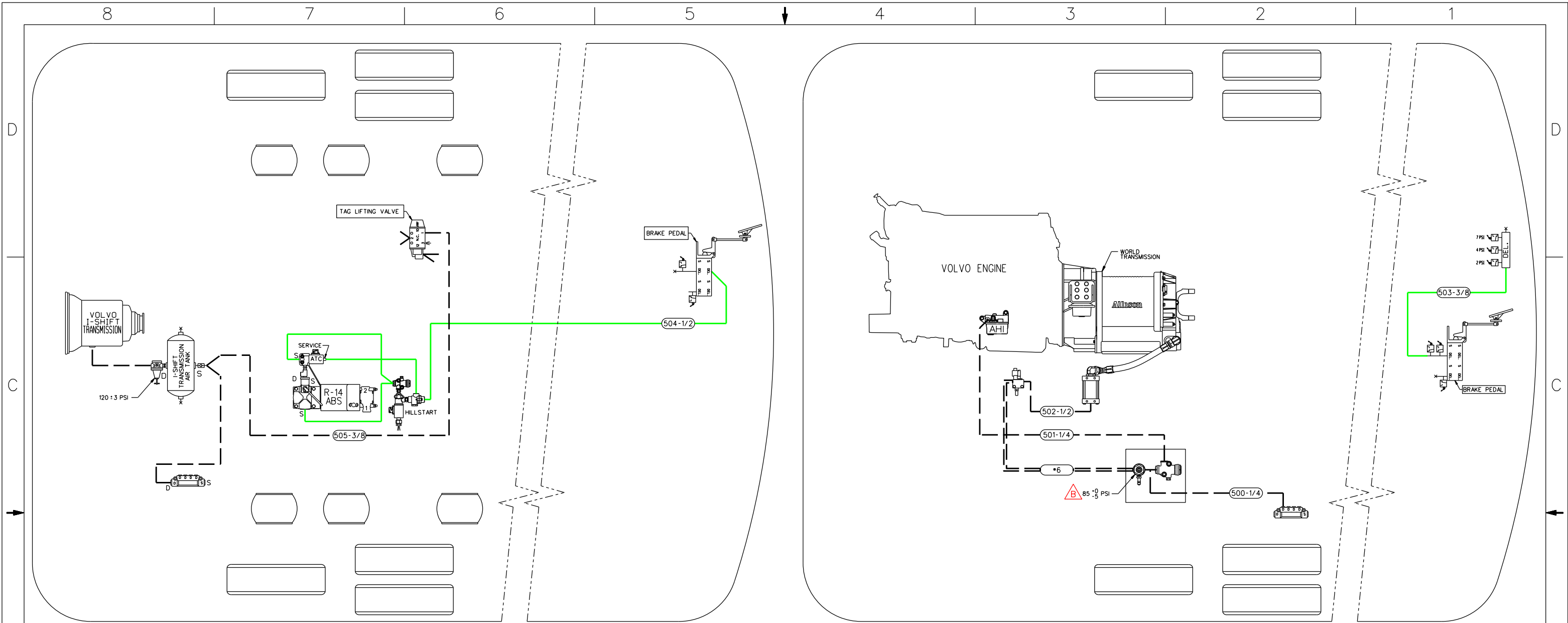
HIGH-BUOY ONLY

NUMEROTATION RANGE:	400 0 499
LAST NUMBER USED:	412
UNUSED NUMBERS:	401,402,410,411,413

LEGEND:	"RES-1": SERVICE TANK	"PT-1": PILOT
"SER": SERVICE	"P": PRESSURE	"A": DRAIN
"EM": EMERGENCY	"A": ACCESSORY	"S": SOLENOID
"EXH": EXHAUST	"D": DELIVERY	"SP": SPRING
"BAL": BALANCE	"S": SUPPLY	

THIS DOCUMENT IS THE EXCLUSIVE PROPERTY OF PREVOST CAR INC.
SITE-CLARK, QUC, AND MAY NOT BE USED OR REPRODUCED FOR ITS
CONTENT OR PART THERE OF DISCLOSED TO OTHERS BY ANY PERSON
OR COMPANY SAVE WITH THE EXPRESS CONSENT IN WRITING FROM
PREVOST CAR INC.

REV	DATE	DESCRIPTION	BY
B	2015/01	O.C. *2013172	Rob.
A	2013/06	O.C. *2012125	Rob.
PREVOST			
Prevost Car Inc. Site-Clark, Quebec, Canada GOR 2V0			
ENG. TECH:	DATE	APPR:	
Rob.	2013/06	M.J.H.	
GENERAL TOL.	ECHELLE: N/A	PROJ:	
mm ± N/A deg ± N/A	REF. DRAWING: D140380	D140381	
MATERIAL:	INSTALLATION		
FINISH:	N/A		
REF.:	H3-45 WITH KNEELING OPTION		
TITLE:	LOW-BUOY ET/OU HIGH-BUOY OPTIONS		
PART NUMBER:	D140407 P4	CD	



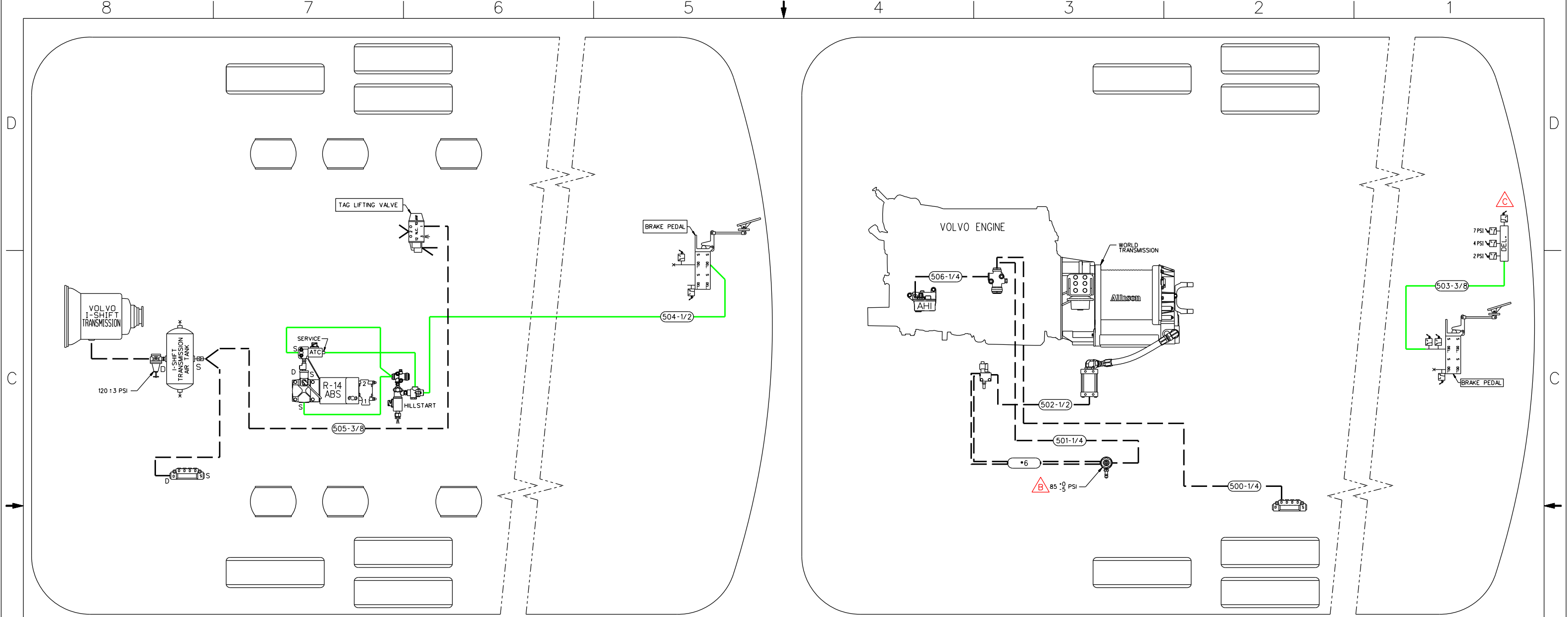
I-SHIFT TRANSMISSION OPTION

ALLISON TRANSMISSION WITH RETARDER OPTION

TUBE COLOR CODING		
ACTIVE	COLOR	CIRCUIT
—	GREEN	PRIMARY & SUPPLY
—	BLACK	ACCESSORIES

NUMEROTATION RANGE:	500 @ 599	LEGEND:	"RES-1": SERVICE TANK	"PT.": PILOT	THIS DOCUMENT IS THE EXCLUSIVE PROPERTY OF PREVOST CAR INC. SITE-CARE, QIE, AND MAY NOT BE USED OR REPRODUCED NOR ITS CONTENT OR PART THERE OF DISCLOSED TO OTHERS BY ANY PERSON OR COMPANY SAVE WITH THE EXPRESS CONSENT IN WRITING FROM PREVOST CAR INC.
LAST NUMBER USED:	505	"SER": SERVICE	"P": PRESSURE	"A": DRAIN	
UNUSED NUMBERS:	-	"EM": EMERGENCY	"A": ACCESSORY	"S": SOLENOID	

B	2015/02	TOLERANCES ADDED	Rob.
A	2013/06	O.C. *2012125	Rob.
REV	DATE	DESCRIPTION	BY
PREVOST			
Prevost Car Inc. Ste-Clotilde, Quebec, Canada G0R 2V0			
ENG. TECH:	Rob.	DATE:	2013/06
APPRI:	M.J.H.	SCALE:	N/A
GENERAL TOL.	mm ± N/A	deg ± N/A	POST:
REF. DRAWING:	D140380	D140381	
MATERIAL:	INSTALLATION		
FINISH:	N/A		
REF.:	H3-45		
TITLE:	OPTIONS I-SHIFT OR ALLISON WITH RETARDER TRANSMISSION		
PART NUMBER:	D140407	P5	CAD



I-SHIFT TRANSMISSION OPTION

ALLISON TRANSMISSION WITH RETARDER OPTION

TUBE COLOR CODING		
ACTIVE	COLOR	CIRCUIT
—	GREEN	PRIMARY & SUPPLY
—	BLACK	ACCESSORIES

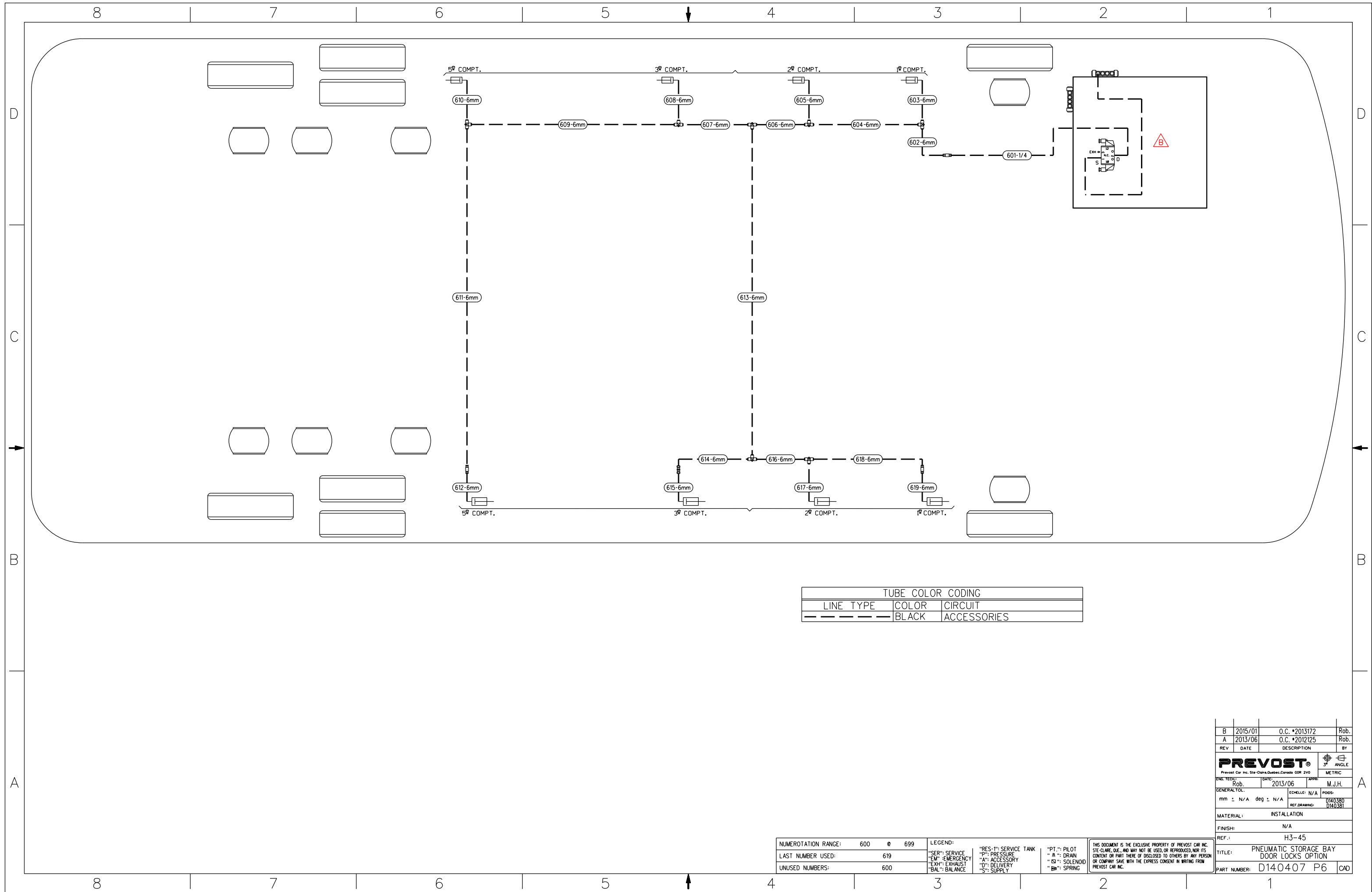
REV	DATE	DESCRIPTION	BY
C	2018/03	OC *2018011_CD	Rob.
B	2015/02	TOLERANCES ADDED	Rob.
A	2013/06	O.C. *2012125	Rob.

PREVOST		3° ANGLE	
Prevost Car Inc. Ste-Clotilde, Quebec, Canada G0R 2V0			
ENG. TECH:	DATE:	APPR:	
Rob.	2013/06	M.J.H.	
GENERAL TOL:	mm ± N/A	deg ± N/A	PODS: D140380 D140381
MATERIAL:	INSTALLATION		
FINISH:	N/A		
REF.:	H3-45		
TITLE:	OPTIONS I-SHIFT OR ALLISON WITH RETARDER TRANSMISSION		
PART NUMBER:	D140407 P5 CAD		

NUMEROTATION RANGE:	500 @ 599
LAST NUMBER USED:	506
UNUSED NUMBERS:	.

LEGEND:	"RES-1": SERVICE TANK	"PT-1": PILOT
"SER-1": SERVICE	"P-1": PRESSURE	"D-1": DRAIN
"EM-1": EMERGENCY	"A-1": ACCESSORY	"S-1": SOLENOID
"EXH-1": EXHAUST	"D-1": DELIVERY	"SP-1": SPRING
"BAL-1": BALANCE	"S-1": SUPPLY	

THIS DOCUMENT IS THE EXCLUSIVE PROPERTY OF PREVOST CAR INC. STE-CLAUDE, QUE., AND MAY NOT BE USED, OR REPRODUCED, NOR ITS CONTENT OR PART THERE OF DISCLOSED TO OTHERS BY ANY PERSON OR COMPANY SAVE WITH THE EXPRESS CONSENT IN WRITING FROM PREVOST CAR INC.



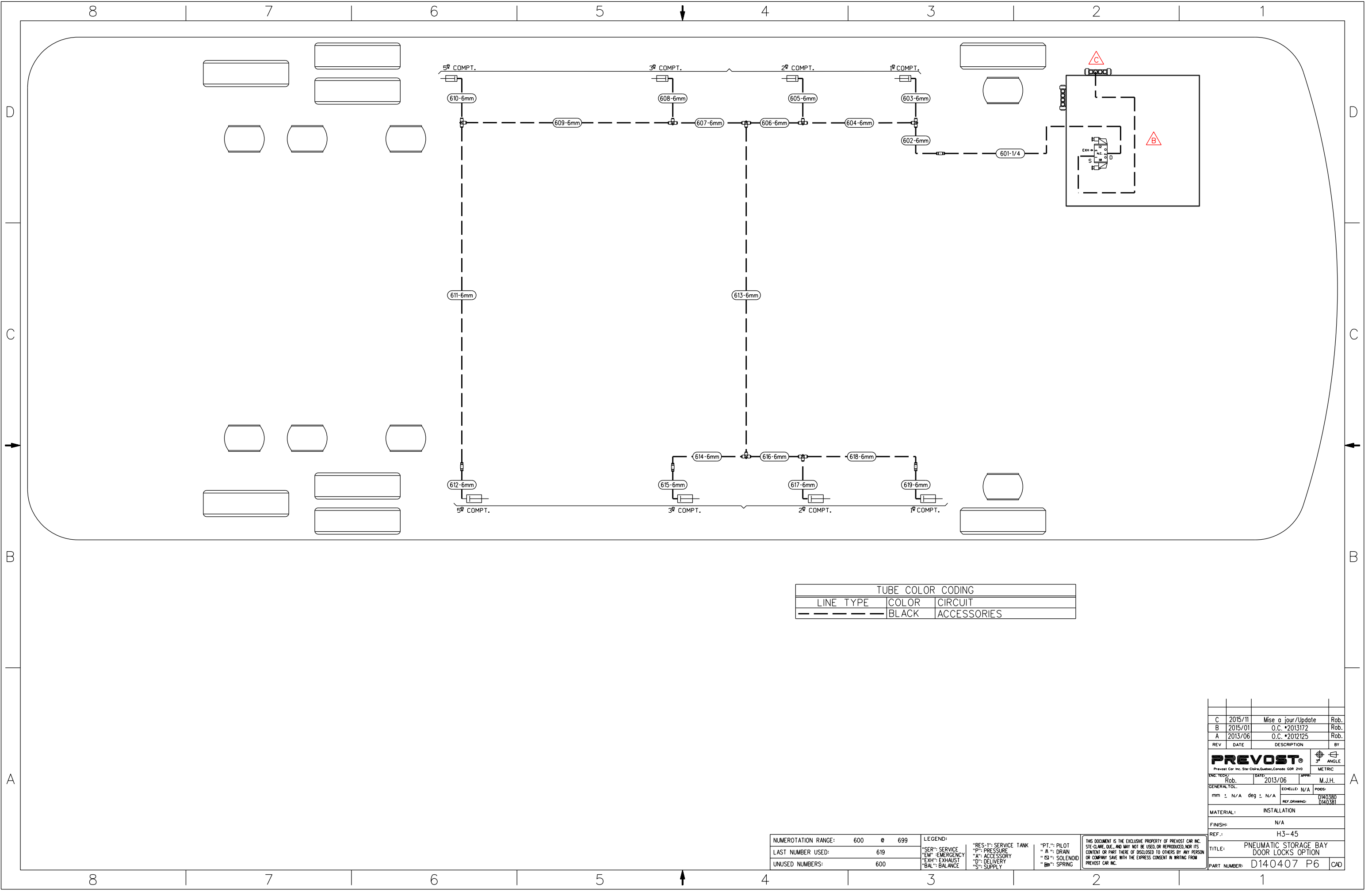
TUBE COLOR CODING		
LINE TYPE	COLOR	CIRCUIT
---	BLACK	ACCESSORIES

NUMEROTATION RANGE:	600 @ 699
LAST NUMBER USED:	619
UNUSED NUMBERS:	600

LEGEND:	"RES-": SERVICE TANK	"PT-": PILOT
"SER-": SERVICE	"P-": PRESSURE	"A-": DRAIN
"EM-": EMERGENCY	"A-": ACCESSORY	"S-": SOLENOID
"EXH-": EXHAUST	"D-": DELIVERY	"SP-": SPRING
"BAL-": BALANCE	"S-": SUPPLY	

THIS DOCUMENT IS THE EXCLUSIVE PROPERTY OF PREVOST CAR INC. SITE-CLARE, QUE., AND MAY NOT BE USED, OR REPRODUCED, NOR ITS CONTENT OR PART THERE OF DISCLOSED TO OTHERS BY ANY PERSON OR COMPANY SAVE WITH THE EXPRESS CONSENT IN WRITING FROM PREVOST CAR INC.

REV	DATE	DESCRIPTION	BY										
B	2015/01	O.C. *2013172	Rob.										
A	2013/06	O.C. *2012125	Rob.										
<table border="1"> <tr> <td>PREVOST®</td> <td>METRIC</td> </tr> <tr> <td>Rob.</td> <td>M.J.H.</td> </tr> <tr> <td>DATE: 2013/06</td> <td>APPR: M.J.H.</td> </tr> <tr> <td>GENERAL TOL: mm ± N/A deg ± N/A</td> <td>ECHELLE: N/A</td> </tr> <tr> <td>REF. DRAWING: 0140380 0140381</td> <td>PODS:</td> </tr> </table>				PREVOST®	METRIC	Rob.	M.J.H.	DATE: 2013/06	APPR: M.J.H.	GENERAL TOL: mm ± N/A deg ± N/A	ECHELLE: N/A	REF. DRAWING: 0140380 0140381	PODS:
PREVOST®	METRIC												
Rob.	M.J.H.												
DATE: 2013/06	APPR: M.J.H.												
GENERAL TOL: mm ± N/A deg ± N/A	ECHELLE: N/A												
REF. DRAWING: 0140380 0140381	PODS:												
MATERIAL: INSTALLATION													
FINISH: N/A													
REF.: H3-45													
TITLE: PNEUMATIC STORAGE BAY DOOR LOCKS OPTION													
PART NUMBER: D140407 P6 CAD													



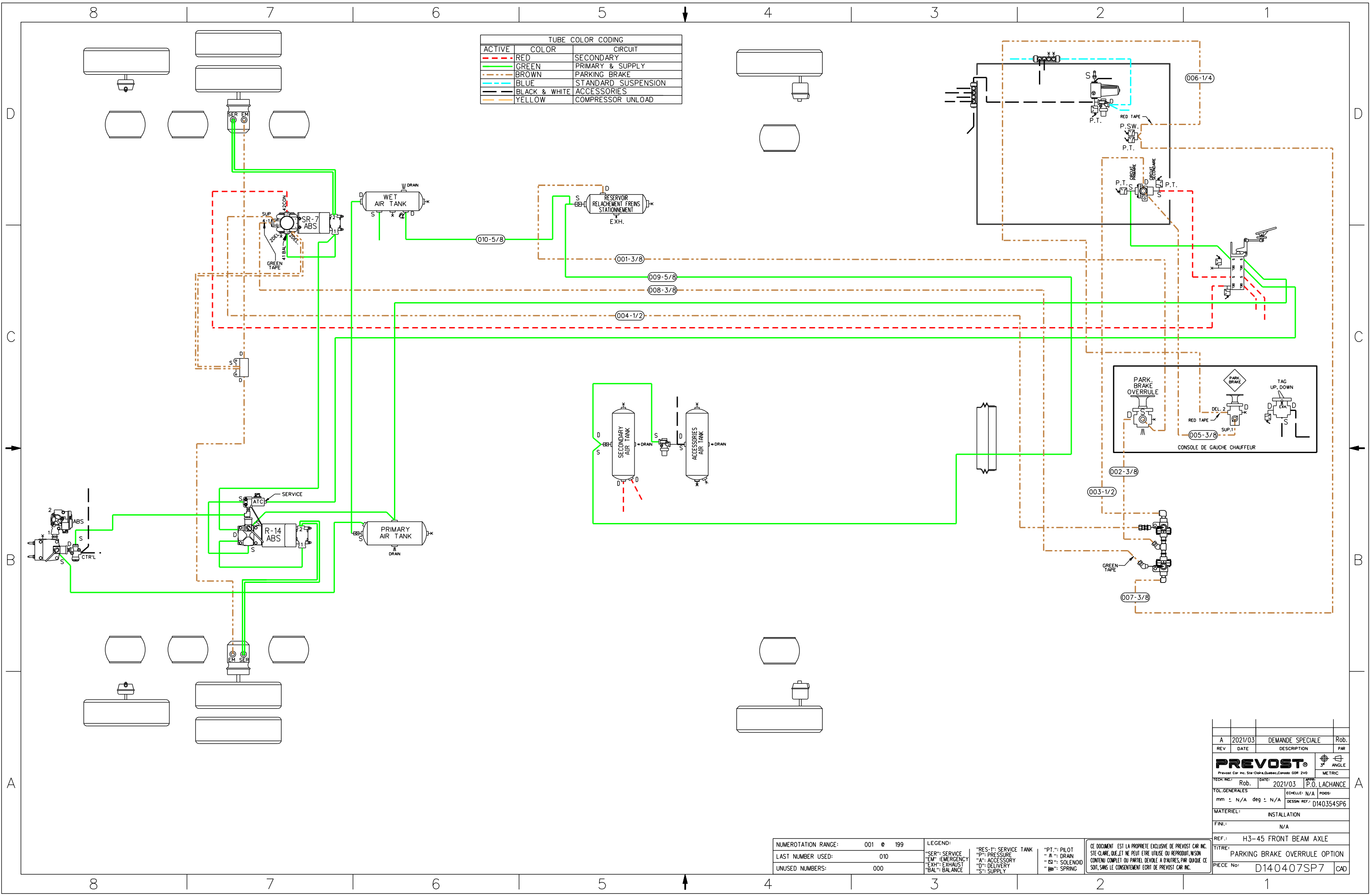
TUBE COLOR CODING		
LINE TYPE	COLOR	CIRCUIT
---	BLACK	ACCESSORIES

NUMEROTATION RANGE:	600 @ 699	LEGEND:	"RES-1": SERVICE TANK	"PT.": PILOT
LAST NUMBER USED:	619	"SER": SERVICE	"P": PRESSURE	"A": DRAIN
UNUSED NUMBERS:	600	"EM": EMERGENCY	"A": ACCESSORY	"S": SOLENOID
		"EXH": EXHAUST	"D": DELIVERY	"SP": SPRING
		"BAL": BALANCE	"S": SUPPLY	

THIS DOCUMENT IS THE EXCLUSIVE PROPERTY OF PREVOST CAR INC. STE-CLAUDE, QUE. AND MAY NOT BE USED, OR REPRODUCED, NOR ITS CONTENT OR PART THERE OF DISCLOSED TO OTHERS BY ANY PERSON OR COMPANY SAVE WITH THE EXPRESS CONSENT IN WRITING FROM PREVOST CAR INC.

REV	DATE	DESCRIPTION	BY
C	2015/11	Mise a jour/Update	Rob.
B	2015/01	O.C. #2013172	Rob.
A	2013/06	O.C. #2012125	Rob.
PREVOST <small>Prevost Car Inc. Ste-Claude, Quebec, Canada G0R 2V0</small>			
ENC. TITLES	DATE	APPROV.	METRIC
Rob.	2013/06	M.J.H.	
GENERAL TOL.	ECHELLE: N/A	POSS:	
mm ± N/A deg ± N/A	REF. DRAWING:	D140380 D140381	
MATERIAL:	INSTALLATION		
FINISH:	N/A		
REF.:	H3-45		
TITLE:	PNEUMATIC STORAGE BAY DOOR LOCKS OPTION		
PART NUMBER:	D140407 P6	CAD	

ACTIVE	COLOR	CIRCUIT
- - -	RED	SECONDARY
—	GREEN	PRIMARY & SUPPLY
- - -	BROWN	PARKING BRAKE
- - -	BLUE	STANDARD SUSPENSION
- - -	BLACK & WHITE	ACCESSORIES
- - -	YELLOW	COMPRESSOR UNLOAD



REV	DATE	DESCRIPTION	PAR
A	2021/03	DEMANDE SPECIALE	Rob.
PREVOST®			
<small>Prevost Car Inc. Ste-Clair, Quebec, Canada QOR 2V0</small>			
TECH.:	Rob.	DATE:	2021/03
TOL. GENERALES		ECHELLE:	N/A
mm ± N/A deg ± N/A		POISS:	
MATERIEL:		INSTALLATION	
FINI:		N/A	
REF.:		H3-45 FRONT BEAM AXLE	
TITRE:		PARKING BRAKE OVERRULE OPTION	
PIECE No.:		D140407SP7	CAD

NUMEROTATION RANGE:	001 @ 199
LAST NUMBER USED:	010
UNUSED NUMBERS:	000

LEGEND:	"RES-1": SERVICE TANK	"PT-1": PILOT
"SER": SERVICE	"P": PRESSURE	"A": DRAIN
"EM": EMERGENCY	"A": ACCESSORY	"S": SOLENOID
"EXH": EXHAUST	"D": DELIVERY	"S": SPRING
"BAL": BALANCE	"S": SUPPLY	

CE DOCUMENT EST LA PROPRIETE EXCLUSIVE DE PREVOST CAR INC. SIE-CLARE, QUE ET NE PEUT ETRE UTILISE OU REPRODUIT, NI SON CONTENU COMPLET OU PARTIEL DEVOLUE A D'AUTRES, PAR QUOIQUE CE SOIT, SANS LE CONSENTEMENT ECRIT DE PREVOST CAR INC.